



OVERALL LENGTH
W/EXTENDED
SWIM PLATFORM

50'10"

15.49 M

OVERALL LENGTH
W/OPT HYDRAULIC
SWIM PLATFORM

50'10"

15.49 M

○ ARCTIC WHITE ● BLACK ● BLUE ● HORIZON ● PATINA

BEAM	14'8" / 4.47 M
DRY WEIGHT (V-DRIVES)	38,985 LB / 17,683 KG
DRY WEIGHT (ZEUS)	41,423 LB / 18,789 KG
DRAFT (V-DRIVES)	49" / 124 CM
DRAFT (ZEUS)	47" / 119 CM
DEADRISE	19°
HOLDING TANK	60 GAL / 227 L

The specification measurements are approximations and subject to variance.



400 GAL
1,514 L



110 GAL
416 L



6 / 8
PEOPLE/OPT

510 SUNDANCER FEATURES

- ≈ Climate-controlled cockpit sunroom
- ≈ Fiberglass hardtop w/pneumatic sunroof
- ≈ Standard LED flatscreen TV with remote DVD player in salon
- ≈ Standard Raymarine® e125 Widescreen Radar/Chartplotter combo
- ≈ Stereo with Wireless Bluetooth™ and media inputs
- ≈ Standard generator with sound shield
- ≈ Optional Zeus® propulsion with helm joystick & Skyhook® station keeper

STANDARD PROPULSION

Twin Cummins® QSC 8.3 - 550 HO
Diesel V-Drive Inboards w/ETS
(T-526 hp - 392 kW)

Sea Ray®
LAUNCH INTO LIVING

510 SUNDANCER®

FEATURES & STANDARD EQUIPMENT

HULL & DECK FEATURES

Bottom Paint
Bow Rail, 316 Stainless Steel w/Welded Stanchions, Intermediate Rails & Life Lines
Cleats, Thru- Bolted - Stainless Steel (8)
Deck Fill Plates, Stainless Steel
Deck Rails, 316 Stainless Steel
Gel Coat:
Hull - Arctic White
Deck - Two Tone, Arctic / Antique White
Graphics, Striping
Handrails, 316 Stainless Steel
Hatch, Deck Vent - Translucent w/Locks & Sky Screen Cover (Trapezoid)
Hull Windows, Fixed, Smoked Acrylic
Lights, Navigation
Portlights, (6)
Rub Rail, PVC w/Stainless-Steel Insert
Spotlight w/Dual Halogen Bulbs - Remote Controlled (ACR®)
Storage, Transom Wall (For Fenders & Gear)
Stringer System, Fiberglass
Sun Pad w/Adjustable Backrest - Forward Deck
Swim Platform, Bolt-On w/Concealed Stainless-Steel Four-Step Swim Ladder w/Integral Grab Handle
Thru-Hull Fittings, Stainless Steel
Vent System, Engine Room - Integral w/Stainless-Steel Vents
Windshield, Tempered/Tinted Curved Glass w/Aluminum Frame
Windshield Washer System
Windshield Wipers w/Delay & Speed Control

CANVAS (SUNBRELLA®)

Canvas Colors - Blue, Black or Taupe
Canvas, Cockpit Seat Covers
Canvas, Windshield Cover

CERTIFICATIONS:

Meets Applicable USCG & ABYC Standards
NMMA Certification

MOORING SYSTEM:

Anchor, Galvanized
Anchor Chute, Stainless Steel
Anchor Rope/Chain Storage w/Gas-Assisted Hatches (2)
Anchor Washdown Spigot w/Hose
Windlass, Rope/Chain w/Foot Switches

COCKPIT FEATURES

Beverage Holders
Door, Transom - Stainless Steel
Handrails, 316 Stainless Steel
Hatch, Engine Service - Gas Assisted
Lighting, Indirect - LED
Outlet, 120V GFI Protected
Seating, U-Shaped Bench w/Storage Below
Ship's Bell
Steps, Boarding (Molded-In)
Table, Cockpit - Fiberglass Top

SUNROOM FEATURES

Beverage Holders
Door, Frameless Sunroom Entry w/Stainless-Steel Accents & Tempered/Tinted Glass (Sliding & Lockable)
Flooring, Wood
Hardtop, Fiberglass w/Pneumatic Retractable Sunroof & Overhead Lighting
Lighting, Indirect LED
Outlet, 12V Accessory
Outlet, 120V GFI Protected
Refrigerator, 120V, Stainless-Steel Drawer Style
Seating, Pivoting Helm (2) w/Armrest, Reclining Backrests, Teak Footrests, Heavy-Duty Adjustable Pedestals
Table, Wood
TV, 32" LED / Smart w/Remote Blu-ray™ Player
Wet Bar w/ Sink, Faucet, Solid-Surface Countertop, Stainless-Steel Handrail, Trash Receptacle, & Storage Cabinet

CABIN FEATURES

Carbon Monoxide Monitors
Carpet, 55-Ounce 100% Stainmaster® BCF Nylon w/Dupont® Advanced Teflon Repel System
Curtains & Drape Trim
Handrails, Stainless Steel
Lighting, 12V Indirect
Lighting, 12V Main - Overhead
Outlet & Switch Plates - Polished Nickel Finish
Outlets, 120V GFI Protected
Outlets, 12V Accessory
Pillows, Accent
Shades, Fabric Day/Night w/Drape Trim
Vacuum System, Central - 120V
Wall Treatment

INTERIOR FINISHES & TREATMENTS:

Wood Cabinetry: Walnut
Window Treatment: Silver Alloy Blinds
Carpet: Dark or Light

SALON (LOWER CABIN):

Entertainment Center
- Gaming System Port
- iPod® Interface w/Docking Station
- MP3 Port w/USB
- 12V Outlet
- Stereo, 12V AM/FM, Wireless Bluetooth™, SiriusXM®
Satellite Receiver w/Antenna, Amplifier, Subwoofer, Speakers (4), Digital Cockpit Remote Control & Speaker Selector Switches
- Storage Cabinet - CD/DVD
- TV, 32" LED / Smart w/Remote Blu-ray™ Player
Flooring, Wood
Mirror, Wall Accent
Seating, L-Shaped Sofa w/Pull-Out Bed - Starboard, w/Storage Below
Steps, Entryway - Alum w/ Wood Treads
Storage, Gunwale Cabinets
Storage, In-Door

GALLEY:

Coffeemaker, Keurig®
Countertop, Solid-Surface w/Stainless-Steel Sink, Faucet & Sink Cover
Flooring, Wood
Handrail, Stainless Steel
Microwave/Convection Oven w/Stainless-Steel Front - 120V
Power Vent, 12V w/Stainless-Steel Grille
Refrigerator/Freezer, Upright w/Stainless-Steel Front - Dual Voltage 120V/12V
Refrigerator, 120V, Cutlery Insert
Storage, Upper & Lower
Stove, Two Burner (Recessed to flush PUPS®) 120V
Trash Receptacle

FORWARD STATEROOM:

Bed, Full-Size Island Style w/Electrically Actuated Extension & Posturepedic Backrest; Elastic Foam Mattress & Drawer Storage Below
Door, Privacy
Flooring, Carpet
Hanging Lockers, Mirrored (2), Cedar Lined w/Lights & Shelves
Headboard, Lattice Style
Storage, Gunwale Cabinets
Storage, Side Shelves
TV, 24" LED, w/Remote Blu-ray™ Player

FORWARD STATEROOM HEAD / SHOWER:

Curtain, Shower
Door, Access from Salon
Flooring, Tile
Handrails, Stainless Steel
Head, VacuFlush®
Portlight, Opening
Power Vent, 12V
Robe Hook
Shower w/ Seat, Adjustable Wand & Acrylic Door
Storage, Medicine Cabinet - Mirrored
Towel Bar
Towel Cabinet
Towels - Sea Ray
Vanity w/Solid-Surface Countertop, Vessel Sink, Faucet & Storage Below

MID MASTER STATEROOM:

Bed, Queen Size w/ Innerspring Mattress, Pillows, Sheets & Coordinated Spread, & Storage Below
Door, Privacy w/Full Length Mirror
Flooring, Carpet
Hanging Locker, Cedar Lined w/Light Mirror, Wall Accent
Nightstands, Built-In w/Countertops
Hull Windows - Port & Stbd
Storage, Medicine Cabinet - Mirrored
Storage, Towel Cabinet
TV, 32" LED / Smart w/Remote Blu-ray™ Player
Vanity w/Solid-Surface Countertop, Vessel Sink, Faucet & Storage Below

MID STATEROOM HEAD / SHOWER:

Curtain, Shower
Door, Mirrored w/Access from Mid-Stateroom
Flooring, Tile
Handrails, Stainless Steel
Head, VacuFlush®
Portlight, Opening
Power Vent, 12V
Robe Hook
Shower w/Seat, Adjustable Wand & Acrylic Door
Towel Bar
Towels - Sea Ray

TECHNICAL FEATURES

AIR CONDITIONING/HEATING:

Custom Integral Vent System
Zone-Controlled Reverse-Cycle System (32,000 BTU) Lower Cabin
Zone-Controlled Reverse-Cycle System (27,000 BTU) Upper Sunroom

CONTROL STATION:

Alarms, High-Water - Bilge, Cabin & Sump
Battery Parallel Switch - Engines
Compass
Dash, Gel Coated
Electronic Throttle & Shift Controls (ETS)
Horn, Air - (Concealed) Dual Trumpet
Instrument Panel
SmartCraft Diagnostics:
- Instrumentation, Custom Sea Ray SmartCraft w/Low-Glare Blue Night Lighting & Chrome Bezels
- 4-in-1 Multigauges (2) (Includes: Fuel Level, Oil Pressure, Voltmeter & Water Temperature)
- Tachometers (2)
SmartCraft VesselView Display:
- Propulsion: Engine Hour Meters, Engine Status, Performance & Fuel, Peak Performance, Boost Pressure (Optional), Troll Control & Cruise Control
- Vessel: Vessel Status, Tank Status, Steering Position & Generator Data
- Environment & Navigation: GPS Interface, Depth & Water Temperature, Depth Alerts, Trip Log Information, Fuel to Waypoint Data & Navigation Data
- Active Alarms/Details
- Alarm History/Details
Steering, Power w/Tilt Wheel
Switch Panel (Backlit)
Switches, Illuminated Weatherproof Rockers & Electronic Dimmer Control
Windshield Defrosters

510 SUNDANCER®

ELECTRICAL SYSTEMS:

Batteries, 8-D w/Boxes (2)
Battery Charger/Converter 120V/50 Amp/12V
Battery Switches, 2-Way Solenoid Activated (MDP & Engine Room)
Cable TV System w/Inlet, TV Shore Cord, Coax Outlets, Gain Control & Omni Directional Antenna
Enclosure, Weatherproof Main Solenoid Disconnect w/ Composite Enclosure
Panel, DC Circuit Breaker - Remote
Panel, DC Main Breaker
Panel, Main Distribution - AC
Shore Power, Cablemaster™ (Glendinning) 240V/50 Amp w/75' Cord & Wireless Remote (Cablemaster N/A w/220V/50 Cycle Shore Power)
Transformer, Shore Power Isolation - 240V/50 Amp

ELECTRONICS:

Electronics Circuit, 50 Amp/12V
Raymarine® e125 Widescreen 12.1" Color LCD, Radar/GPS/Chartplotter w/Integrated 4-kW HD Open Array Scanner
VHF Radio w/Remote Speaker, 8' Fiberglass Antenna & GPS Antenna

ENGINE ROOM:

Bilge Pumps, 12V Automatic (3)
Bilge Pumps, 12V Automatic High- Water (1 Engine Room, 1 Cabin)
Blowers, 12V Bilge (2)
Exhaust, Wet w/ Dual Stage Lift Mufflers
Fire Suppression System - Automatic w/Manual Pull
Gel-Coated Engine Room
Insulation, Engine Room - 2" w/Loaded Vinyl Barrier
Ladder, Stainless Steel - Removable
Lighting, 12V

FUEL SYSTEM:

Diesel Fuel System - Electric w/Transfer Pump
Fuel Filters - Remote (Racor®)
Fuel Lines, USCG - Type A-1
Fuel Tanks, Aluminum w/Manual Shutoff Valves & Ultrasonic Sending Units

GENERATOR:

11.5 kW Onan® Diesel (120/240V/60 Cycle) w/Sound Shield, Remote Start, Muffler, Freshwater Cooling, Fuel Filter w/ Crossover Fuel, Seacock & Seawater Strainer

UNDERWATER GEAR:

V-Drives:
- Bonding System w/Zinc Hull Plate
- Propellers, Nibral 4-Blade
- Propeller Shafts, 2.25" Stainless Steel (2) - Aquamet 22
- Rudders, Manganese-Bronze
- Seacocks - Engines
- Seawater Strainers - Engines
- Shaft Logs, Dripless w/Extra Seal Carrier Kit
- Struts, Manganese-Bronze

Trim Tabs, Hydraulic
Zeus Drives (Optional):
- Propellers, Stainless Steel
- Trim Tabs, Hydraulic (Integrated w/Zeus Pod Drives)

WASTE SYSTEM:

Common Drain System
Head System (VacuFlush®)
Holding Tank Level Indicators - MDP
Holding Tank w/Dockside Pump-Out
Sump Box w/Pump - Automatic

WATER SYSTEM:

Freshwater Washdown Spigots w/Hoses - Transom, Engine Room & Anchor Locker
Manifold System w/Shutoff Valves
Pressure Water System w/12V Pump & Charcoal Filtration System
Shower, Cockpit - Single-Lever Hot & Cold w/Stainless-Steel Door, Braided Hose & Ergonomic Shower Wand
Water Heater, 240V (11 Gallon)
Water Inlet, Dockside

STANDARD PROPULSION

TWIN DIESEL V-DRIVES:

T-VD-Cummins® QSC 8.3 - 550 HO w/ETS
(T-526 hp - 392 kW)

OPTIONS & ACCESSORIES

OPTIONAL PROPULSION

TWIN DIESEL V-DRIVES:

T-VD-Cummins QSC 8.3 - 600 HO w/ETS
(T-574 hp - 428 kW)

TWIN DIESEL ZEUS® DRIVES:

T-Zeus-Cummins QSC 8.3 - 550 HO
(T-526 hp - 392 kW)
T-Zeus-Cummins QSC 8.3 - 600 T3
(T-574 hp - 428 kW)
Zeus Propulsion Includes Helm Joystick, Skyhook® Station Keeper & Integrated Autopilot

ELECTRONICS OPTIONS

Autopilot, Raymarine® Evolution (V-Drives Only) (Interfaces w/Chartplotter)
Raymarine® CP 300 Fishfinder Module for e125
Raymarine e125 12.1" Widescreen GPS/Chartplotter - Auxiliary Display

INDIVIDUAL OPTIONS

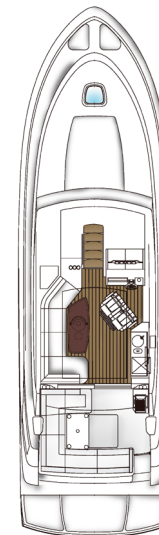
Air Conditioner Upgrade - Sunroom
Anchor, Stainless Steel (In-Lieu-of Galvanized)
Bow Thruster (w/Batteries & Charger) (N/A w/Zeus)
Bow & Stern Thruster (w/Batteries & Charger) (N/A w/Zeus)
Canvas, Cockpit Enclosure
Canvas, Dash Cover

Canvas, Mesh Windshield Shades
Carpet Runners, Interior (Sunbrella)
Cockpit Carpet Liner
Cockpit Seat Covers
Colored Hull (Black, Blue, Horizon or Patina)
Door, Sunroom Entry - Stainless Steel
Digital Satellite System (DSS TV)
Digital Satellite System - KVH D7 TracVision® for True HD
Flooring, Cockpit w/Entry Steps - Teak
Flooring, Swim Platform - Teak
Grey Water System (N/A w/ Washer/Dryer)
Grill - Cockpit, Built-In 240V/60
Icemaker, 120V - Cockpit
Interior Treatment: Wood Cabinetry Finishes - High Gloss Cherry (Light or Dark)
Interior Treatment: Wood Blinds - Light Cherry, Dark Cherry or Walnut
Interior Treatment: Roman Shades
Joystick Docking Control for V-Drives (Coupled w/Bow Thruster)
Joystick Docking Control for V-Drives (Coupled w/Bow & Stern Thrusters)
Lighting, Underwater - Transom (4)
Macerator w/Seacock Interlock System
Oil Changer System - Engines & Generator
Ottoman, Salon
Portlights, Opening - Salon & Galley
Prop Holders - For Spare Zeus Props (Props Not Included)
Prop Holders - w/Spare Props (V-Drive Only)
Remote Control, Universal - Logitech Harmony
Rig for Passerelle System - Transom
Rod Holders (2)

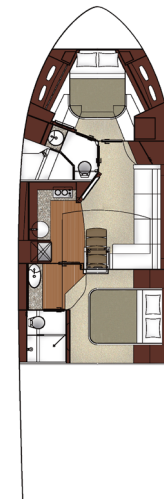
Speaker Upgrade, Cockpit Exterior
Stereo System Upgrade - Master Stateroom and Salon
Sun Pad Filler Cushions - Cockpit
Sunroof Sunshades, Manual - Sunroom
Sunshade, Retractable, Electric - Aft Cockpit (SureShade®)
Swim Platform, Hydraulic Marine Lift w/Remote & Manual Pump
Table, High-Gloss Teak w/Vinyl Cover - Cockpit (In Lieu of Std Table)
Table, Oversized Teak Table - Cockpit
Table, Coffee (Movable) w/High-Gloss Wood Surface & Storage Below - Interior
Third Stateroom Option
Transformer, Shore Power Isolation Boost - 240V/50 Amp
Vent, Manual Hardtop Overhead
Washer/Dryer Combo, 120V (N/A w/Gray Water System)
Windlass, All-Chain (In Lieu of Std Rope/Chain)
Windlass Capstan
Windshield w/Opening Side Windows - Port & Stbd
Yacht Flag & Flagpole

CE Option

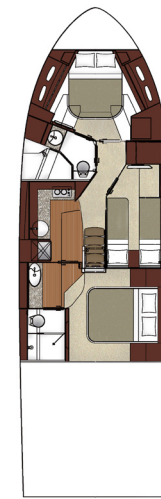
NOTE: Some features and options may not be available when a boat is built for regions outside North America and/or has CE Certification. Boats ordered with 220V/50 cycle electrical systems will have the appropriate appliances in the corresponding voltage.



COCKPIT/SUNROOM LAYOUT



LOWER CABIN LAYOUT



LOWER CABIN OPTIONAL
3-STATEROOM LAYOUT

510 SUNDANCER®

There comes a peace at the very center of everything, when the world pivots around you in perfect balance. Some people spend a lifetime trying to find this spot. Others simply settle into the solarium-like covered cockpit of the 510 Sundancer. Light streams in through endless acres of glass above and to every side and even follows you when you head below under SkyFlow's glass cathedral ceiling over the galley and salon. Dissolving the separation between indoor and outdoor helped the 510 Sundancer win the AIM Marine Group Editor's Choice Award. Its technical prowess and inspired execution ensured the win, and the peace you will find therein.



The well-designed control station features standard SmartCraft® diagnostics, VesselView display, plus a Raymarine® Radar/Chartplotter & VHF radio.



Fully equipped galley includes stainless-steel microwave/convection oven, refrigerator/freezer and solid-surface countertop with stainless-steel sink.



Going below has never been this bright of an idea. The 510 Sundancer was engineered with patented SkyFlow Design™ dissolving the line between indoor and outdoor spaces, and allowing natural light deep into the yacht like never before. Galley and salon connect with the enclosed cockpit beneath a long stretch of glass, bringing bright sunlight into the interior. It's just another way that Sea Ray is making better yachts.



The water's peaceful solitude is part of its unique beauty, but great quiet time doesn't need to stop there. The 510 Sundancer's full-beam mid-ship master stateroom has a private head, commodious closet system and welcoming sitting area, truly making it your own private oasis.



Everyone loves a brightly lit room. The 510 Sundancer's enclosed sunroom with oversized deckhouse windows and expansive pneumatic sunroof lets the outside in while providing comfortable, climate-controlled living without the need for canvas. You'll relax in the inviting solarium, wishing a room so perfect were in your home.

ABYC
Sponsor of ABYC Marine
Certification School



Sea Ray



08262015

Note: Not all accessories shown in pictures or described herein are standard equipment or even available as options. Some features and options may not be available when a boat is built for outside North America and/or has CE Certification. Options and features are subject to change without notice. Not all model year boats may contain all the features or meet the specifications described herein. Confirm availability of all accessories and equipment with an authorized Sea Ray dealer prior to purchase. Printed in the U.S.A. August 2015 ©Sea Ray Boats.

Sea Ray Boats, 800 South Gay St, Suite 1200, Knoxville, TN 37929. Internet address: <http://www.searay.com>