



OVERALL LENGTH
W/STD or OPT HYDRAULIC
SWIM PLATFORM

50' 10"
15.5 M

ARCTIC WHITE
 BLACK
 BLUE
 HORIZON
 PATINA

BEAM	15'4" / 4.67 M
DRY WEIGHT (V-DRIVES)	44,623 LB / 20,240 KG
DRY WEIGHT (ZEUS DRIVES) est	46,800 LB / 21,228 KG
DRAFT (V-DRIVES)	52" / 132 CM
DRAFT (ZEUS DRIVES)	50" / 127 CM
DEADRISE	17°
HOLDING TANK	68 GAL / 257 L

The specification measurements are approximations and subject to variance.



500 GAL
1,892 L



130 GAL
492 L



8
PEOPLE

510 FLY FEATURES

- ≈ V-Drive w/Digital Throttle & Shift or optional Zeus Propulsion with joystick control
- ≈ Luxurious full beam master stateroom with multiple configurations
- ≈ Standard three stateroom layout and two full heads, each with separate showers
- ≈ Social zone design with galley up and featuring continuous cockpit / salon interaction
- ≈ Standard, fully complemented, upper & lower helm stations
- ≈ Expansive bridge layout with multiple seating, lounging and dining areas
- ≈ Standard Raymarine® e125 Radar/Chartplotter combo at lower control station

STANDARD PROPULSION

Twin Cummins® QSC 8.3 - 600 HO
Diesel V-Drives w/ETS
(T-574 hp - 428 kW)

Sea Ray
LAUNCH INTO LIVING

510 FLY

FEATURES & STANDARD EQUIPMENT

HULL & DECK FEATURES

Bottom Paint
Bow Rail, 316 Stainless Steel w/Welded Stanchions, Intermediate Rails & Life Lines
Cleats, Thru-Bolted - Stainless Steel (8)
Deck Fill Plates, Stainless Steel
Deck Rails, 316 Stainless Steel
Gel Coat, Arctic White
Graphics, Striping
Handrails, 316 Stainless Steel
Hatch, Deck Vent - Translucent w/Locks & Sky Screen Cover
Hull Windows, Smoked Acrylic
Lights, Navigation
Portlights (2, Opening)
Resin, High-Performance Vinyl Ester
Rub Rail, PVC w/Stainless-Steel Inset
Spotlight w/Dual Halogen Bulbs - Remote Controlled (ACR®)
Storage, Transom Wall (For Lines & Gear)
Sun Pad w/Drink Holders - Forward Deck
Swim Platform, Integral/Extended w/Concealed Stainless-Steel
Four-Step Swim Ladder w/Integral Grab Handle
Thru-Hull Fittings, Stainless Steel
Vent System, Engine Room - Integral
Windshield, Bridge Venturi
Windshield, Tempered/Tinted Curved Glass

CANVAS (SUNBRELLA®)

Canvas Colors - Blue, Black or Taupe
Bridge Seats & Console Covers
Cockpit Seat Covers

CERTIFICATIONS:

Meets Applicable USCG & ABYC Standards
NMMA Certification

MOORING SYSTEM:

Anchor, Galvanized
Anchor Chute, Stainless Steel
Anchor Rope/Chain Storage w/Gas-Assisted Hatches
Anchor Washdown Spigot
Windlass, Rope/Chain w/Foot Switches

BRIDGE FEATURES

Beverage Holders
Console Glove Box
Handrails, 316 Stainless Steel
Hatch, Sliding Bridge Access
Lighting, Indirect LED
Outlet, 12V Accessory
Outlet, 120V GFI Protected
Radar Arch
Refrigerator, 120V
Seating, Helm
Seating, Convertible w/Storage Below
Ship's Bell
Sunpad
Table, Fiberglass - Aft

COCKPIT FEATURES

Beverage Holders
Door, Frameless Cabin Entry w/Stainless Steel Accents & Tempered/Tinted Glass (Sliding & Lockable)
Door, Transom
Floor Liner, Self-Bailing Fiberglass
Handrails, 316 Stainless Steel
Lazarette w/Dedicated Line & Fender Stowage
Lighting, LED - White
Outlet, 120V GFI Protected

Seating, Aft Bench
Steps, Boarding (Molded-In)
Steps, Exterior Bridge Access w/Stainless-Steel Handrail & Storage Below

CABIN FEATURES

Carbon Monoxide Monitors
Carpet, 100% Stainmaster®
Curtains, Custom
Doors, Wood
Handrails, Stainless Steel
Lighting, 12V Indirect - LED
Outlets, 12V Accessory
Outlets, 120V GFI Protected
Outlet & Switch Plates - Polished Nickel Finish
Pillows, Accent
Shades, Fabric Day/Night w/Drape Trim
Storage, In-Floor
Vacuum System, Central - Dual Inlet
INTERIOR FINISHES & TREATMENTS:
Wood Cabinetry: Walnut
Window Treatment: Silver Alloy Blinds
Carpet: Dark or Light

SALON:

Control Station - Lower Helm w/Single Stidd Helm Seat
Entertainment Center:
- Gaming System Port, iPod® Interface w/Docking Station, MP3 Port w/USB, 12V Outlet, Stereo - 12V AM/FM, Wireless Bluetooth™, SiriusXM® Satellite Receiver w/Antenna, Amplifier, Subwoofer, Speakers (4), Digital Cockpit Remote Control & Speaker Selector Switches
- Storage Cabinet - CD & DVD
- TV, 50" LED / Smart w/Remote Blu-ray™ Player

Flooring, Wood
Seating, Sofa - Opposing
Storage Cabinets
Table, Folding Wood

GALLEY:

Coffeemaker, Keurig®
Countertop, Solid Surface w/Sink, Faucet & Sink Cover
Flooring, Wood
Freezer w/Icemaker & Stainless Steel Front - 120V
Microwave/Convection Oven w/Stainless-Steel Front - 120V
Power Vent, 12V
Refrigerator w/Stainless-Steel Front - Dual Voltage (120V/12V)
Storage, Drawers
Storage, Galley Pantry
Stove, Two-Burner - 240V
Trash Receptacle

MASTER STATEROOM (FULL BEAM, MID-SHIP):

Bed, Queen Size w/Innerspring Mattress, Pillows, Sheets, Coordinated Spreads & Drawer Storage Below
Door, Privacy w/Full Length Mirror
Dressers - Port & Starboard
Flooring, Carpet
Headboard, Lattice Style
Mirrored Hanging Locker, Cedar Lined w/Light
TV, 32" LED / Smart w/Remote Blu-ray™ Player

MASTER STATEROOM HEAD/SHOWER:

Door, Access from Master Stateroom
Flooring, Tile
Handrails, Stainless Steel
Head, VacuFlush®
Power Vent, 12V
Robe Hook, Head Door

Shower w/Adjustable Shower Wand & Acrylic Door
Storage, Medicine Cabinet - Mirrored
Towel Bar
Towels - Sea Ray
Vanity w/Solid-Surface Countertop, Sink, Faucet & Storage Below

FORWARD STATEROOM:

Bed, Queen-Size w/Innerspring Mattress, Pillows, Sheets, Coordinated Spread & Storage
Doors, Privacy
Door, Access to Fwd Head/Shower
Flooring, Carpet
Hanging Lockers, Mirrored and Cedar Lined w/Light
Storage, Lower Cabinet
TV, 24" LED, w/Remote Blu-ray™ Player

FORWARD HEAD/SHOWER:

Door, Access from Companionway
Flooring, Tile
Handrails, Stainless Steel
Head, VacuFlush®
Power Vent, 12V
Robe Hook, Head Door
Shower w/Adjustable Shower Wand & Acrylic Door
Storage, Medicine Cabinet - Mirrored
Towel Bar
Towels - Sea Ray
Vanity w/Solid-Surface Countertop, Sink, Faucet & Storage Below

MID STATEROOM:

Convertible Twin Beds, Pillows, Sheets, Coordinated Spreads & Storage Below
Door, Privacy
Flooring, Carpet
Hanging Locker, Cedar Lined w/Light
Mirror
Storage, Drawers

TECHNICAL FEATURES

AIR CONDITIONING/HEATING:

Zone-Controlled Reverse-Cycle System, 240V (40,000 BTU)
Custom Integral Vent System

BRIDGE CONTROL STATION:

Alarms, High Water - Bilge & Cabin
Battery Parallel Start System - Engines
Compass
Dash, Gel Coated
Electronic Throttle & Shift Controls (ETS)
Horn, Air - 12V
Instrument Panel
SmartCraft® Diagnostics:
- Instrumentation, Custom Sea Ray® SmartCraft w/Low-Glare Blue Night Lighting & Chrome Bezels
- 4-in-1 Multigauges (2) (Includes: Fuel Level, Oil Pressure, Voltmeter & Water Temperature)
- Tachometers (2)
SmartCraft VesselView Display:
- Propulsion: Engine Hour Meters, Engine Status, Performance & Fuel, Peak Performance, Boost Pressure (Optional), Troll Control & Cruise Control
- Vessel: Vessel Status, Tank Status, Steering Position & Generator Data
- Environment & Navigation: GPS Interface, Depth & Water Temperature, Depth Alerts, Trip Log Information, Fuel to Waypoint Data & Navigation Data
- Active Alarms/Details
- Alarm History/Details

Steering, Power Assisted Hydraulic w/Tilt Wheel
Switch Panel, Backlit
Switches, Illuminated Weatherproof Rockers & Electronic Dimmer Control

ELECTRONICS (BRIDGE):

Electronics Circuit, 12V/50 Amp
VHF Radio w/Remote Speaker & 8' Fiberglass Antenna

LOWER CONTROL STATION:

Alarms, High Water - Bilge & Cabin
Battery Parallel Start System - Engines
Compass
Dash, Gel Coated
Defroster
Electronic Throttle & Shift Controls (ETS)
Horn, Air - 12V
Instrument Panel - High Gloss
SmartCraft® Diagnostics:
- Instrumentation, Custom Sea Ray® SmartCraft w/Low-Glare Blue Night Lighting & Chrome Bezels
- 4-in-1 Multigauges (2) (Includes: Fuel Level, Oil Pressure, Voltmeter & Water Temperature)
- Tachometers (2)
SmartCraft Digital Throttle & Shift (DTS)
SmartCraft VesselView Display:
- Propulsion: Engine Hour Meters, Engine Status, Performance & Fuel, Peak Performance, Boost Pressure (Optional), Troll Control & Cruise Control
- Vessel: Vessel Status, Tank Status, Steering Position & Generator Data
- Environment & Navigation: GPS Interface, Depth & Water Temperature, Depth Alerts, Trip Log Information, Fuel to Waypoint Data & Navigation Data
- Active Alarms/Details
- Alarm History/Details
Steering, Power Assisted Hydraulic w/Tilt Wheel
Switch Panel, Backlit - High Gloss
Switches, Illuminated Weatherproof Rockers & Electronic Dimmer Control
Windshield Wipers w/Wiper Controls

ELECTRONICS (LOWER):

Electronics Circuit, 12V/50 Amp
Raymarine® e125 Widescreen 12.1" Color LCD, Radar/GPS/Chartplotter w/Integrated 4-kW HD Open Array Scanner - Primary Display
VHF Radio w/Remote Speaker & 8' Fiberglass Antenna

ELECTRICAL SYSTEMS:

Batteries, 8-D Type w/Trays
Battery Charger/Converter, 120V/60 Amp/12V
Battery Solenoid Switches, 12V (3)
Cable Television System w/Inlet, TV Shore Cord, Coax Outlets, Gain Control & Omni Directional Antenna Enclosure, Weatherproof Main Solenoid Panel, Circuit Breaker - Remote Panel, DC Main Breaker
Panel, Main Distribution - AC Panel, Main Distribution - DC
Shore Power, Cablemaster™ (Glendinning) 240V/50 Amp w/75' Cord & Wireless Remote (Cablemaster N/A w/220V/50 Cycle Shore Power)
Shore Power, Additional Inlet - 120V/50 Amp w/75' Cord and 6kva Transformer
Transformer, Shore Power Isolation - 240V/50 Amp
Wiring, Color-Coded w/Chafe Protection

510 FLY

ENGINE ROOM:

Bilge Pumps, 12V Automatic
 Bilge Pumps, 12V Automatic High-Water
 Blowers, 12V Bilge (2)
 Fire Suppression System - Automatic w/Diesel Shutdown, Override & Manual Pull
 Gel-Coated Engine Room
 Insulation, Engine Room - 2" w/Loaded Vinyl Barrier
 Ladder, Stainless Steel - Removable
 Lighting, 12V

FUEL SYSTEM:

Diesel Fuel System - Electric w/Transfer Pump
 Fuel Filters, Remote (Racor®)
 Fuel Lines, USCG - Type A-1
 Fuel Tanks, Aluminum w/Manual Shut-Off Valves & Sending Units

GENERATOR:

17 kW Onan® - Diesel (120V/240V/60 Cycle) w/Sound Shield,
 Remote Start, Muffler, Closed Cooling, Fuel Filter, Seacock &
 Seawater Strainer

UNDERWATER GEAR:

V-Drives:
 - Bonding System w/Zinc Hull Plate
 - Propellers, Nibral 4-Blade
 - Propeller Shafts, 2.25" Stainless Steel (2) - Aquamet 22
 - Rudders, Manganese-Bronze
 - Seacocks - Engines
 - Seawater Strainers - Engines
 - Shaft Logs, Dripless w/Extra Seal Carrier Kit
 - Struts, Manganese-Bronze
 - Trim Tabs, Hydraulic
 Zeus Drives (Optional):
 - Propellers, Stainless Steel
 - Trim Tabs, Hydraulic (Integrated w/Zeus Pod Drives)

WASTE SYSTEM:

Common Drain System
 Head System (VacuFlush®)
 Holding Tank Level Indicators - MDP
 Holding Tank w/Dockside Pump-Out (68 Gallon)
 Sump Box w/Automatic Pump & Hinged Service Lid

WATER SYSTEM:

Freshwater Washdown Spigots w/Hoses - Transom, Engine Room & Anchor Locker
 Pressure Water System w/12V Pump & Charcoal Filtration System
 Shower, Cockpit - Single-Lever Hot & Cold w/Stainless-Steel Door,
 Braided Hose & Ergonomic Shower Wand
 Water Heater, 240V (20 Gallon)
 Water Inlet, Dockside
 Water Manifold System

STANDARD PROPULSION

TWIN DIESEL V-DRIVES:

T-Cummins® QSC 8.3 - 600 HO w/ETS
 (T-574 hp - 428 kW)

OPTIONS & ACCESSORIES

OPTIONAL PROPULSION

TWIN DIESEL V-DRIVES:

T-VD-Cummins QSM 11 - 715 HO
 (T-684 hp - 510 kW)

TWIN DIESEL ZEUS® DRIVES:

T-Zeus-Cummins QSC 8.3 - 600 HO
 (T-574 hp - 428 kW)

ELECTRONICS OPTIONS

CommandView Video Docking Assistance
 Raymarine® Evolution Autopilot (V-Drives Only) (Interfaced with e125 Displays)
 Raymarine CP 300 Fishfinder Module (Interfaced with e125 Displays)
 Raymarine e125 Widescreen GPS/Chartplotter - Auxiliary Display (Lower Station)
 Raymarine e125 Widescreen GPS/Chartplotter - Auxiliary Display (Bridge)
 Raymarine Aft Facing Bridge Camera (Interfaced with e125 Displays)

BRIDGE OPTIONS

Canvas, Bimini Top - Bridge
 Canvas, Full Bridge Cover
 Carpet Liner - Bridge
 Flooring, Teak - Bridge
 Grill & Sink - Bridge
 Grill (only) - Bridge (N/A w/Cockpit Grill)
 Hardtop w/Lighting, Sunroof & Electrically Retractable Skylight
 Hardtop, Extended w/Lighting, Polycarbonate Canvas Enclosure, Air Conditioning
 Hardtop, Extended w/Lighting, Sunroof, Polycarbonate Canvas Enclosure, Air Conditioning
 Table, High-Gloss Teak - Aft Bridge Area (In Lieu of Std. Table)
 Table, High-Gloss Teak - Fwd Port Bridge Area

INDIVIDUAL OPTIONS

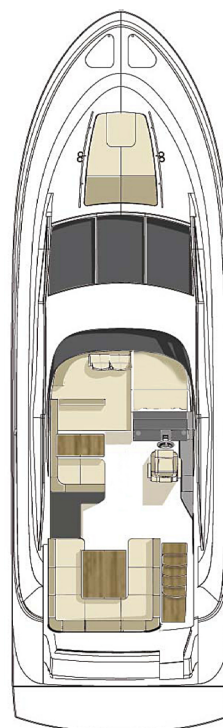
Anchor, Polished Stainless Steel (In Lieu of Galvanized)
 Bow Rail, Split
 Bow Thruster
 Bow & Stern Thruster Combo
 Cabin Audio Upgrade Harman Kardon® / Bose Speakers
 Canvas, Cockpit Enclosure
 Canvas, Dash Cover (For Lower Helm)
 Canvas, Mesh Windshield Shades
 Carpet Liner - Cockpit
 Carpet Runners, Interior (Sunbrella®)
 Chairs, Folding (2) Storable Dinette Seating
 China, Place Settings, Glasses & Flatware Set w/Custom Dedicated Storage - Includes: Includes 6 sets of Dinnerware, 8 Sets of Glassware and 45 Piece Flatware Set
 Cockpit Seat Covers
 Colored Hull - Black, Blue, Horizon or Patina
 Crew Quarters:
 Single Bunk; Hatch; Vacuflush Head System; 12VDC Lighting; 120V Outlet; Opening Stainless-Steel Portlight; Air Conditioning/Heating (6,000 BTU); Sink & Shower (Only Available w/V-Drive Propulsion)
 Digital Satellite System (DSS TV)
 Door, Cabin Entry - Stainless Steel (In-Lieu-of Standard Powder Coated Aluminum)
 Flooring, Teak - Cockpit & Bridge Steps
 Flooring, Teak - Deck Catwalks
 Flooring, Teak - Swim Platform
 Grey Water System

Grill - Cockpit
 Icemaker, Cockpit, 120V
 Interior Treatment: Wood Cabinetry Finishes - High Gloss Cherry (Light or Dark)
 Interior Treatment: Wood Blinds - Light Cherry, Dark Cherry or Walnut
 Interior Treatment: Roman Shades
 Inverter, 120V/60 Cycle
 Joystick Docking Control for V-Drives (Coupled w/Bow Thruster)
 Joystick Docking Control for V-Drives (Coupled w/Bow & Stern Thrusters)
 Lights, Underwater - Transom (4)
 Macerator w/Seacock Interlock System
 Multi Station Docking - Cockpit Controls - V-Drives
 Multi Station Docking - Cockpit Controls - Zeus
 Oil Changer System, Engines & Generator
 Passerelle System, Telescoping - Transom
 Portlights, Opening - Each Sateroom
 Propellers, Spare w/Holder (Pair) for V-Drives
 Propeller Holder For Spare Zeus Props (Props Not Included)
 Refrigerator, Cockpit
 Refrigerator & Freezer Upgrade - Galley (To Drawer Style)
 Remote Control, Universal - Logitech Harmony
 Rod Holders (2) - Cockpit
 Salon Ottoman
 Seakeeper® Gyro Stabilizer
 Seating, Additional Cockpit - Portside

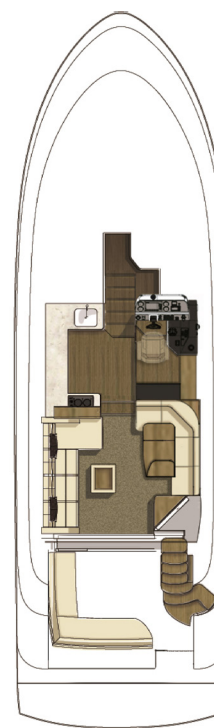
Seating, Opposing w/Storage & Table - Master Stateroom (Replaces Stbd Dresser)
 Seating, Salon Sofa w/Pullout Bed
 Stereo System Upgrade - Salon & Master Stateroom
 Speaker Upgrade, Exterior - Cockpit & Bridge
 Sun Pad Filler Cushions - Bridge & Aft Seating Areas
 Swim Platform, Hydraulic Marine Lift w/Remote & Manual Pump (1,000 lb Capacity)
 Table, Fiberglass - Cockpit
 Table, High-Gloss Teak - Cockpit
 Table, High/Low - Salon
 TV, 24" LED, w/Remote Blu-ray™ Player - Mid Stateroom
 Washer/Dryer Combo, 120V
 Windlass, All-Chain
 Windlass, Capstan
 Windlass - Stern
 Windshield w/Manual Opening Side Window
 Wine Cooler/Chiller
 Yacht Flag & Flagpole

CE Option

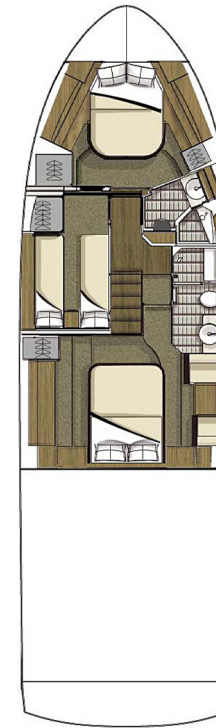
NOTE: Some features and options may not be available when a boat is built for regions outside North America and/or has CE Certification. Boats ordered with 220V/50 cycle electrical systems will have the appropriate appliances in the corresponding voltage.



BRIDGE LAYOUT
 (Shown w/Opt Features)



UPPER CABIN & COCKPIT LAYOUT
 (Shown w/Opt Features)



LOWER CABIN LAYOUT
 (Shown w/Opt Features)

510 FLY

Think of consummate hosts you've met. They support social interaction with beautiful settings and all the right amenities and offerings to bring life to the party, keeping the mood bright, lively and happy. You've just imagined the 510 Fly, with its highly functional social zones and crowd-pleasing features to keep you and your guests at full-smile. SkyFlow Design circulates light and air throughout the boat. The galley, salon and cockpit combine like an indoor/outdoor great room, and the expansive bridge layout is the icing on the cake. Hosting is easy in such an environment. And then when the pace has slackened, a full-beam master suite breathes peace into every weekend getaway.



The open, spacious salon with a sliding door leading to the cockpit gives the vessel a feeling of abundance. Upper and lower helm stations mean you can captain from wherever your crew wants to congregate.



Power and security go hand in hand with state-of-the-art Raymarine® electronics and navigational equipment.



Room to breathe. The 510 Fly's open floor plan on the upper level allows a continuous flow of light, air and conversation through the salon and galley. You'll find that here, conversation comes easily and the numerous windows stream in glorious sunshine.



A gourmet galley with solid surface countertop and under-counter stainless steel refrigerator and freezer makes entertaining a pleasure.



Bringing along as many friends or family members as you want is a part of cruising's fun. The 510 Fly's three-stateroom layout means time on the water in comfort for everyone including a lattice-style headboard and double dressers in the master.



Elegant luxury features and designer head appointments make the 510 Fly unlike any other yacht in its class.

ABYC
Sponsor of ABYC Marine
Certification School



Sea Ray



08262015

Note: Not all accessories shown in pictures or described herein are standard equipment or even available as options. Some features and options may not be available when a boat is built for outside North America and/or has CE Certification. Options and features are subject to change without notice. Not all model year boats may contain all the features or meet the specifications described herein. Confirm availability of all accessories and equipment with an authorized Sea Ray dealer prior to purchase. Printed in the U.S.A. August 2015 ©Sea Ray Boats.